

Bejeweled

❖ BY LUCY FAZELY

Lots of scraps or purchased fabrics from a coordinated collection create a wonderful look using this simple pattern.

PROJECT SPECIFICATIONS

Quilt Size: 42" x 60"

Block Size: 2" x 4 1/2"

Number of Blocks: 216

FABRIC & BATTING

- 9 fat quarters dark/medium prints
- 9 fat quarters light/medium prints
- 5/8 yard purple print
- Backing 46" x 64"
- Batting 46" x 64"
- 6 yards self-made or purchased binding

SUPPLIES & TOOLS

- Neutral color all-purpose thread
- Clear nylon monofilament
- Basic sewing tools and supplies, rotary cutter, mat and ruler

INSTRUCTIONS

1. Cut two strips each dark/medium and light/medium prints 5" x 18". Subcut strips into 2 1/2" segments for A. You will need 12 A rectangles from each print.
2. Cut four strips each dark/medium and light/medium prints 1 1/2" x 18". Subcut strips into 1 1/2" segments for B. You will need 48 B squares from each print.
3. Draw a diagonal line on the wrong side of each B square as shown in Figure 1.
4. Randomly choose four light/medium B squares and a dark/medium A rectangle.
5. Place one B square on one corner of A placing the diagonal line as shown in Figure 2; sew on the marked line.



Figure 1

Draw a diagonal line on the wrong side of each B square.

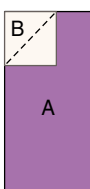
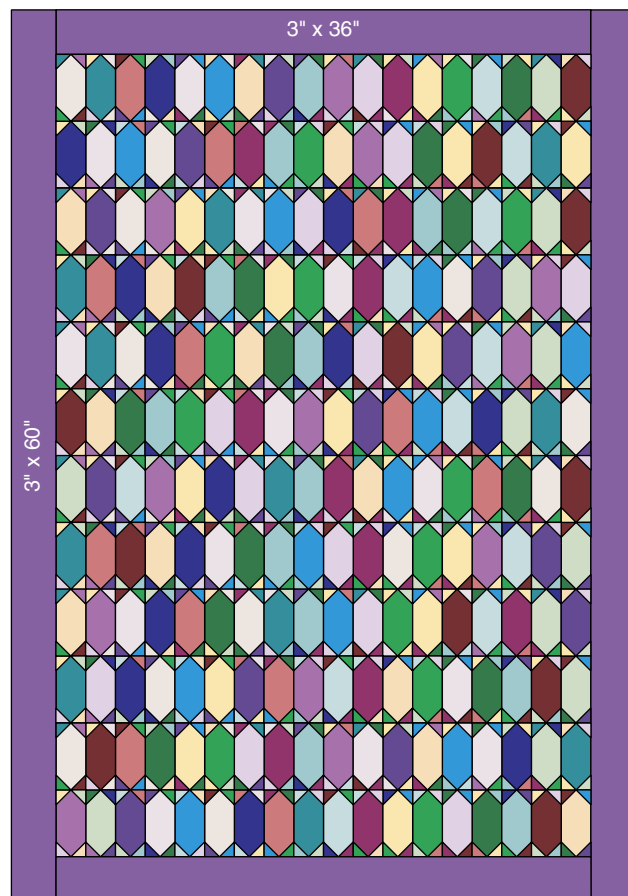


Figure 2

Place 1 B square on 1 corner of A placing the diagonal line as shown.

6. Repeat with a second B square on opposite end corner as shown in Figure 3; press B pieces to right side as shown in Figure 4. **Note:** You may trim seam allowance to 1/4" as shown in Figure 5 or leave the double layer of fabric to stabilize the units.



Bejeweled
Placement Diagram
42" x 60"

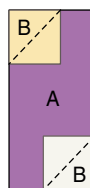


Figure 3

Repeat with a second B square on opposite end corner as shown.

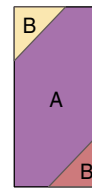


Figure 4

Press B pieces to right side as shown.

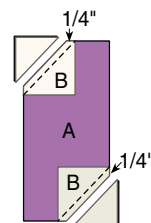


Figure 5

Trim seam allowance to 1/4" as shown.

7. Pin and sew remaining B squares to remaining corners of A; press to complete one unit as shown in Figure 6. Repeat for all light/medium B squares and dark/medium A rectangles and dark/medium B squares and light/medium A rectangles.



8. Lay out blocks in 12 rows of 18 blocks each alternating light and dark blocks referring to the Placement Diagram.

9. Join blocks in rows; join rows to complete pieced center. Press seams in one direction.

10. Cut (and piece as necessary) two strips each purple print $3\frac{1}{2}'' \times 36\frac{1}{2}''$ and $3\frac{1}{2}'' \times 60\frac{1}{2}''$. Sew the shorter strips to the short sides of the pieced center and longer strips to opposite long sides; press seams toward strips.

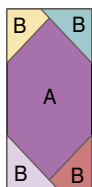


Figure 6
Press B pieces to the right side to complete 1 block.

11. Sandwich batting between completed top and prepared backing piece; pin or baste layers together to hold flat.

12. Quilt as desired by hand or machine. **Note:** The quilt shown was machine-quilted in the ditch of seams using clear nylon monofilament in the top of the machine and all-purpose thread in the bobbin. The border was quilted in straight lines with $1''$, $\frac{1}{4}''$, $\frac{3}{4}''$ and $\frac{1}{4}''$ spacing.

13. When quilting is complete, trim edges even; remove pins or basting. Bind edges with self-made or purchased binding to finish. ❖